

# Product manual



# LED 200 BEAM

# 1 SECURITY TIPS

**WARNING!!! To reduce the risk of fire, electric shock, or injury to persons, follow these important safety instructions:**

- non-professionals, not to disassemble the light arbitrarily and lighting accessories inside.
- rated voltage range: AC110V-120V/60Hz or AC200V-240V / 50HZ (to be selected).
- not beam irradiate the flammable materials, flammable materials and the lamp should be maintained at least 1M over the distance.
- lamps used in ambient temperature:  $-15\text{ }^{\circ}\text{C}$   $-40\text{ }^{\circ}\text{C}$  , the highest temperature of the surface of the lamp:  $60\text{ }^{\circ}\text{C}$  .
- to keep away from the liquid substance and humid environment.
- before using the lights must ensure the good grounding, can not install charging and remove any parts.
- the installation of lamps, must be fixed screw fasteners with additional security cable and regular inspection.
- lamps consecutive working hours is not recommended more than 10 hours.
- should stop using the lights in time when happens unusual conditions during the process
- lamp parts of the rotation, external accessories and paste parts should be regular inspected, such as the emergence of loose and rock, should be reinforced in a timely manner to prevent the accident.
- lamps adopt strong winds to refrigerate, it is easy to accumulate the dust, so you have to clean it weekly especially the cooling air opening, otherwise the dust will plug leading to poor light

## 2 TECHNOLOGY REFERENCE

Input voltage: AC100-240V, 50/60HZ

Power Consumption: 300W

Light source: 200W white light LED module

Average life of the light source: 20,000 + hours

Color temperature: 7000-8000K

Control mode: master and slave, DMX, manual

DMX Channel:12/15 Channels

Support for the RDM function, and the DMX software upgrade function

Color Wheel:12 colors + white light, with a rainbow effect, can be arbitrarily positioned

Gobo Wheel: 1 fixed pattern wheel, 14 patterns + white light hole, Shake the effect of running water

Colorful Wheel: an independent 6 color wheel, can achieve the pattern of rainbow effect

Prism : 8 / 16 prism, bidirectional rotation

Angle : Pan =540°, Tilt= 270°,with 16bit scan accuracy, Automatic reset

Atomizing mirror: Atomizing diffuser

Beam angle: 2.2°

Strobe: synchronous pulse frequency strobe, random pulse frequency strobe

Focus: the pattern can be adjusted arbitrarily clear

Appearance: high-strength and temperature-resistant engineering plastic shell, streamlined appearance design

Menu display: 1.77-inch color LCD display, Both Chinese and English display, can be inverted display

Protection: efficient heat dissipation system, full temperature monitoring, automatic protection of over temperature

Ambient temperature: 0°C-45°C

Cooling system: forced air cooling

Protection level: IP20

Dimensions: 12.6"x9.1"x20" in

Weight: 12KG

### 3 Board Instruction

Address(地址)	001-512		
RUN(运行)	DMX512		
	Auto1(自走 1)		
	Auto2(自走 2)		
	Sound1(声控 1)		
	Sound2(声控 2)		
TEST(测试)	ALL(整灯测试)		
	Pan&Tilt(X/Y 测试)		
SET(设置)	Disp.setting(显示设置)	Display(屏幕保护)	ON/OFF(开/关)
		Filp display(显示翻转)	ON/OFF(开/关)
		Key lock(按键锁设置)	ON/OFF(开/关)
		Disp flash(显示闪烁设置)	ON/OFF(开/关)
		Back light(背光亮度)	1-50
INFO(信息)	Time Info(时间信息)	Total Fix. Hours(总计使用时间)	XXXX:XX
		Partial Fix. Hours(本次使用时间)	XXXX:XX
		Total Lamp Hours(总计亮灯时间)	XXXX:XX
		Partial Lamp Hour(本次亮灯时间)	XXXX:XX
	Software Ver(软件版本号)	Vx.xx	

MANUAL( 手动)	Pan(X 轴)	000-255
	Pan Fine(X 轴微调)	000-255
	Tilt(Y 轴)	000-255
	Tilt Fine(Y 轴微调)	000-255
	Speed(速度)	000-255
	Dimmer(总调光)	000-255
	Strobe(频闪)	000-255
	Colour Wheel(颜色盘)	000-255
	Gobo Wheel(图案盘)	000-255
	Prism1(棱镜 1)	000-255
	Prism2(棱镜 2)	000-255
	Focus(调焦)	000-255
	Reset(复位)	000-255
RESET(复位)	All Reset(整机复位)	No/Yes(否/是)

## 4 DMX CHANNEL SHEET

16C H	Function	DMX Value	Description
1	Pan	0-255	Pan
2	Pan Fine	0-255	Pan Fine
3	Tilt	0-255	Tilt
4	Tilt Fine	0-255	Tilt Fine
5	Speed	0-255	Pan/Tilt speed
6	Dimmer	0-255	Intensity 0 to 100%
7	Shutter/Strobe	0-31	Led turn off
		32-63	Led turn on
		64-95	Strobe effect slow to fast
		96-127	Led turn on
		128-159	Pulse-effect in sequences
		160-191	Led turn on
		192-223	Random strobe effect slow to fast
		224-255	Led turn on
8	Colour Wheel	0-127	Continual positioning
		128 - 129	Open/white
			<b>Positioning</b>
		130-134	Colour 1
		135-139	Colour 2
		140-144	Colour 3

		145-149	Colour 4
		150-154	Colour 5
		155-159	Colour 6
		160-164	Colour 7
		165-169	Colour 8
		170-211	Forwards rainbow effect from fast to slow
		212-213	No rotation
		214-255	Backwards rainbow effect from slow to fast
9	<b>Sta.Gobo Wheel</b>	0-5	Open/hole
			<b><i>Positioning</i></b>
		6-14	Gobo 1
		15-23	Gobo 2
		24-32	Gobo 3
		33-41	Gobo 4
		42-50	Gobo 5
		51-59	Gobo 6
		60-68	Gobo 7
		69-77	Gobo 8
		78-86	Gobo 9
			<b><i>Shaking gobos from slow to fast</i></b>
		87-95	Gobo 1
		96-104	Gobo 2
		105-113	Gobo 3

		114-122	Gobo 4
		123-131	Gobo 5
		132-140	Gobo 6
		141-149	Gobo 7
		150-158	Gobo 8
		159-167	Gobo 9
		168-169	Open/hole
		170-211	Forwards gobo wheel rotation from fast to slow
		212-213	No rotation
		214-255	Backwards gobo wheel rotation from slow to fast
10	Rot.GoboWheel	0-11	Open/hole
			<b><i>Positioning</i></b>
		12-24	Gobo 1
		25-37	Gobo 2
		38-50	Gobo 3
		51-63	Gobo 4
		64-76	Gobo 5
		77-89	Gobo 6
			<b><i>Shaking gobos from slow to fast</i></b>
		90-102	Gobo 1
		103-115	Gobo 2
		116-128	Gobo 3



		129-141	Gobo 4
		142-154	Gobo 5
		155-167	Gobo 6
		168-169	Open/hole
		170-211	Forwards gobo wheel rotation from fast to slow
		212-213	No rotation
		214-255	Backwards gobo wheel rotation from slow to fast
<b>11</b>	<b>Gobo.Rot Wheel</b>	0 - 127	Gobo rotation and indexing
		128 - 191	Forwards Gobo rotation from fast to slow
		192 - 193	No rotation
		194 - 255	Backwards Gobo rotation from slow to fast
<b>12</b>	<b>Frost</b>	0 - 127	Open position(hole)
		128 - 255	Frost
<b>13</b>	<b>Prism1</b>	0 - 127	Open position(hole)
		128 - 192	Prism1
		193 - 255	Forwards prism1 rotation from slow to fast
<b>14</b>	<b>Prism2</b>	0 - 127	Open position(hole)
		128 - 192	Prism2
		193 - 255	Forwards prism2 rotation from slow to fast
<b>15</b>	<b>Focus</b>	0-255	Continual adjustment from near to near
<b>16</b>	<b>Reset</b>	0-79	No Function

		80-84	Total reset
		85-88	Pan/Tilt reset
		89-255	Reserved

## 5 FIXED EQUIPMENT

Please keep the equipment far away from the flammable objects like finishing material, etc. keep at least 0.5m distance from the flammable objects.

Warning: using two lamp clamps fix the equipment on the bottom of the lamp holder according to the instruction. to make sure the place of install the lamp is safe and suitable ,and the installation point that have chosen is safety and reliable.

The place of installing the lamp must support the 10 times weight of the lamp itself. And test the pensile place and make sure the place isn't out of the shape.

Must install the second protection when fixing the equipment like proper protective screening. The second protection is used to prevent drop off and lost of lamp and components.

Lamps can directly install the lamp holder , which is shown in the

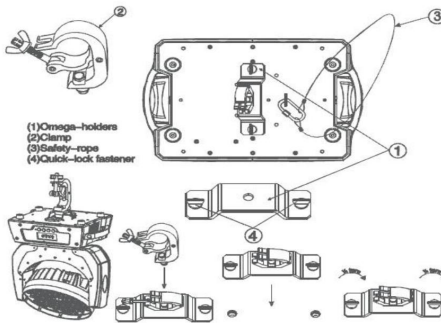



figure:

## 6 MAIN MACHINE CONNECTION

Please checking the power equipment supported.

Please put the plug of power source wire connect with the main power source .

( EU )Wire	Wire(America)	Direction of wire	General marks
Brown	Black	Live	L
Light blue	White	Neutral	N
Yellow/Green	Green	Earth	



## Warranty Card

Name	Model
------	-------

Production	Purchase
------------	----------

End User
Company Name:
Add:

Sale Store	
Link man:	Stamp
Tel:	

Description: These must be truthfully fill, seal by the end-user and point-of-sale, or else the warranty will not work (warranty period and terms, see the following)

warranty period: one year since purchase warranty terms: 1、 If fail when using the product in normal state, you can made under the provisions of the warranty, show the warranty card and purchase bills(copy), and enjoy free maintenance service in a specific service center or the manufacturer.

2. The following will be the implementation of paid service:

- (1)Without the effective warranty card
- (2)There's blank, alter and no point-of-sale name
- (3)Fail caused by unresistance
- (4)Fail caused by transportation or unloading
- (5)Fail caused by not operate by manual
- (6)Fail caused by disassemble without unauthorized
- (7)Fail caused by using the unauthorized control system

### Note:

Based on our company continue to improve the product, the statement containing data may have changed, and will not notice the change any more. Company retains its right to change specifications related when product is improved. Thanks for your understanding.